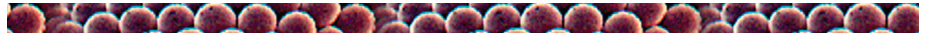




1

Cartoon Worksheet



After analyzing other cartoons, it is now time to have a try at your own!

Draw your own cartoon about a current issue such as disease, the environment, or anything that is happening in your own school, community, state, country, or global community. The following guidelines will help you to get your imagination started.



Cartoon Components

a. Describe your issue. Is it Civic. . .Environmental . . .Social. . .International. . .Global?

b. Who is in your cartoon?

c. Are there other people? Institutions. . .Countries . . . Animals?

d. What is the purpose? Is it to raise awareness?

e. What symbols will you use?

f. What makes this issue interesting?



Background Information

a. Determine what key background information the reader will need to interpret your cartoon in an intelligent way.

b. Formulate questions that ask the reader about this key information.



Cartoon Technique

Write four questions that will focus the reader on specific aspects of your cartoon.

a.

b.

c.

d.

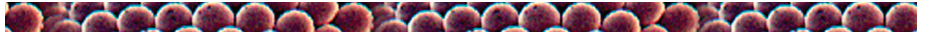


Theme

a. Write the theme (or point) of the cartoon here:



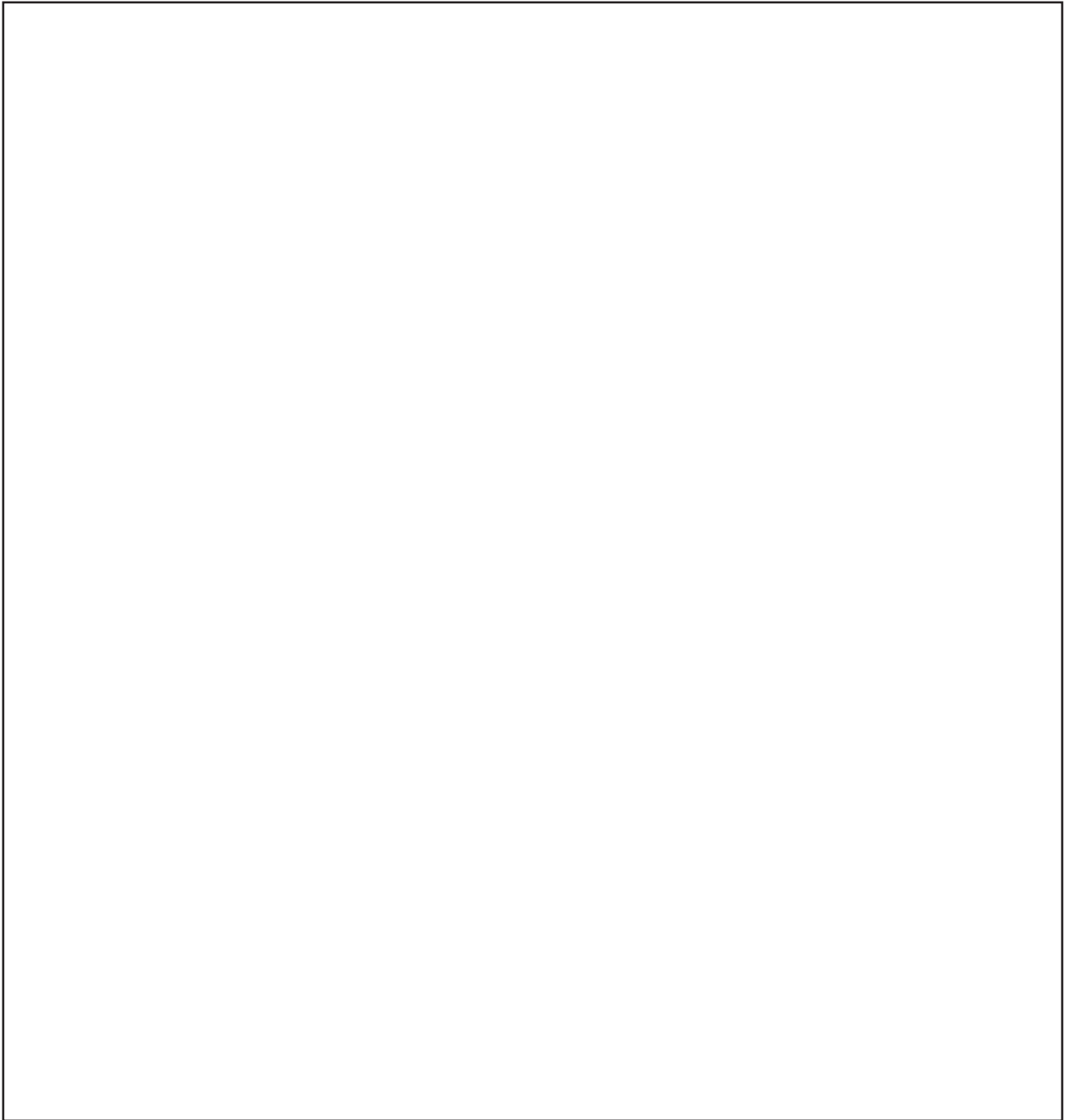
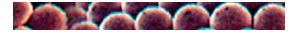
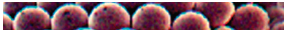
2 Cartoon Worksheet



Draw a draft of your cartoon below. Discuss it with someone else to get feedback.



After drawing your cartoon, give it a title:



Once you have completed your cartoon, put your name in the blank space at the top of the page. Write the name of your cartoon above the picture. Your teacher will create a gallery of cartoons.